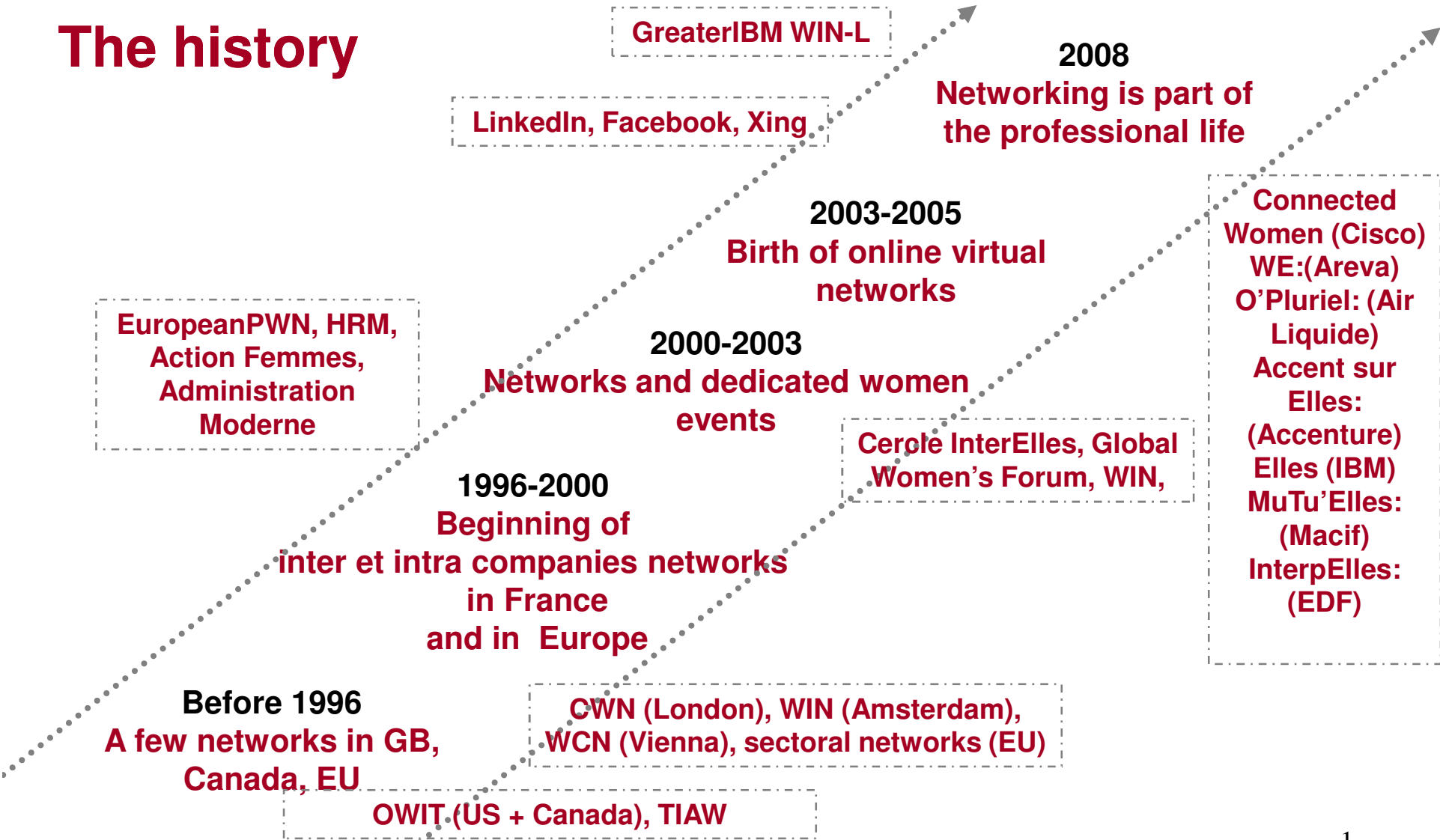




European Professional Women's Network

The history





European Professional Women's Network

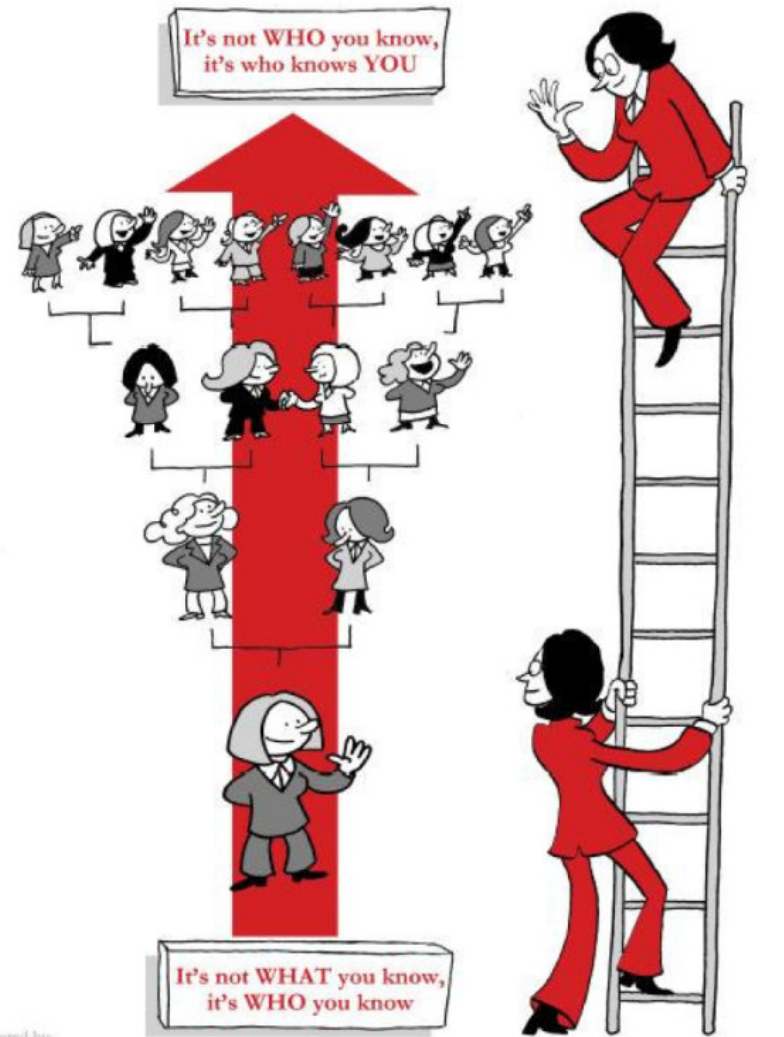
Women are present in social networks, above the 30% “visibility” threshold

Réseau	Founded	Members volume	growth	% women	orientation
LinkedIn	May '03	17 millions incl. 5 in Europe	189% (oct'07-oct'08)	38%	Business, international
Viadeo	Summer '04	3 millions incl. 1,8 en Europe	140% (nov'06-nov'07)	40%	Business, France/Chine
Xing	Novembrer '03	5 millions incl. 2,8 in Allemagne+Espagne, 0,8 in the rest of Europe	185% in 2007 (with acquisitions)	31%	Business, Europe
Facebook	February '04	42 millions incl. 1,2 in France	125% (oct'07-oct'08)	56%	Social, international, nascent business use
Spoke	2002	40 millions and 2,3M entreprises		?	International, business, CRM
Plaxo		20 millions		60%	International, business, address book



European Professional Women's Network

Who knows you?



powered by:
 Capgemini
ASSOCIATED COMPANY OF DELTA GROUP

© MecStudio / Senoeri